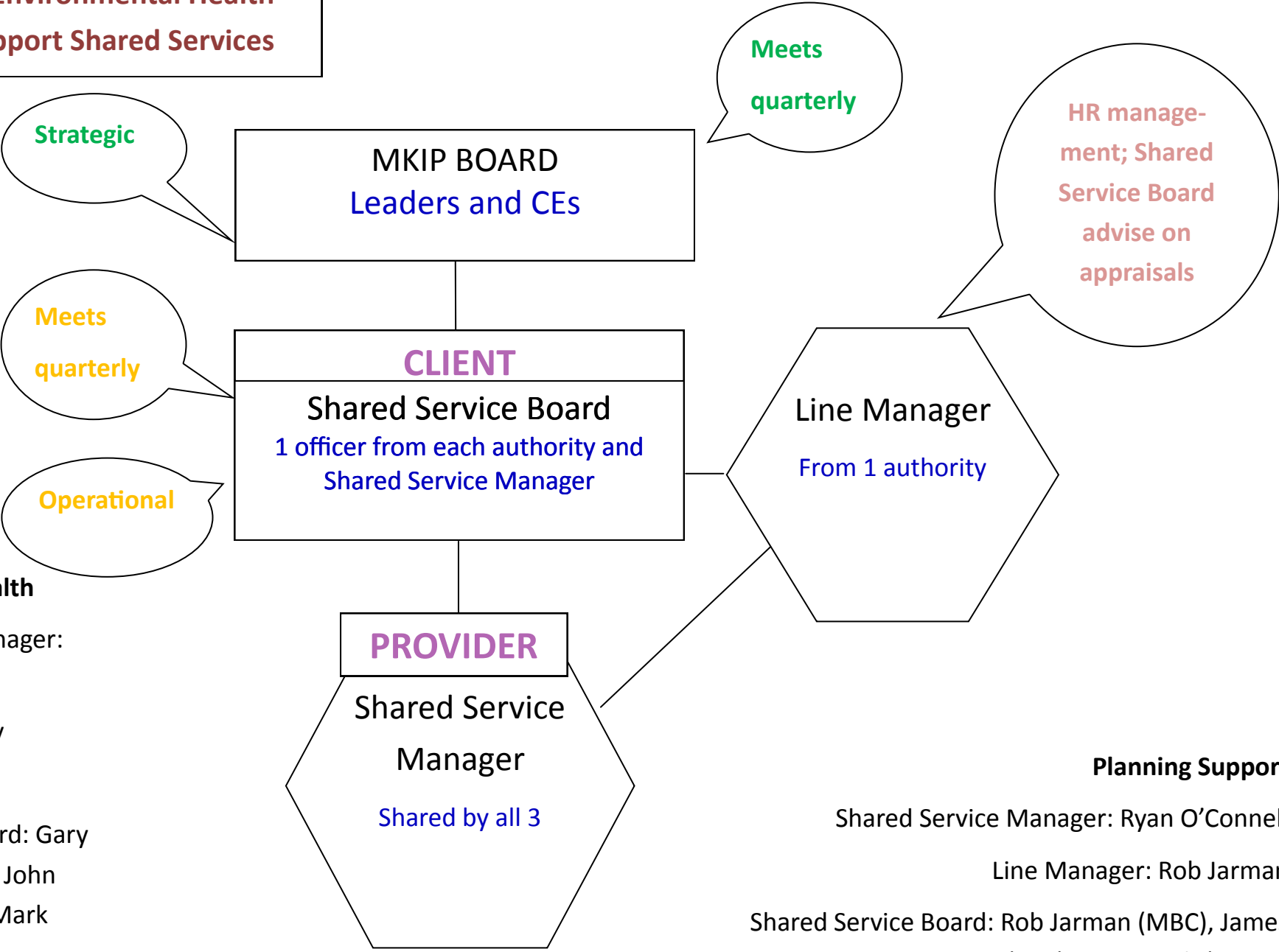


**Governance for Environmental Health and Planning Support Shared Services**



**Environmental Health**

Shared Service Manager:

Tracey Beattie

Line Manager: Gary

Stevenson

Shared Service Board: Gary

Stevenson (TWBC), John

Littlemore (MBC), Mark

Radford (SBC)

**Planning Support**

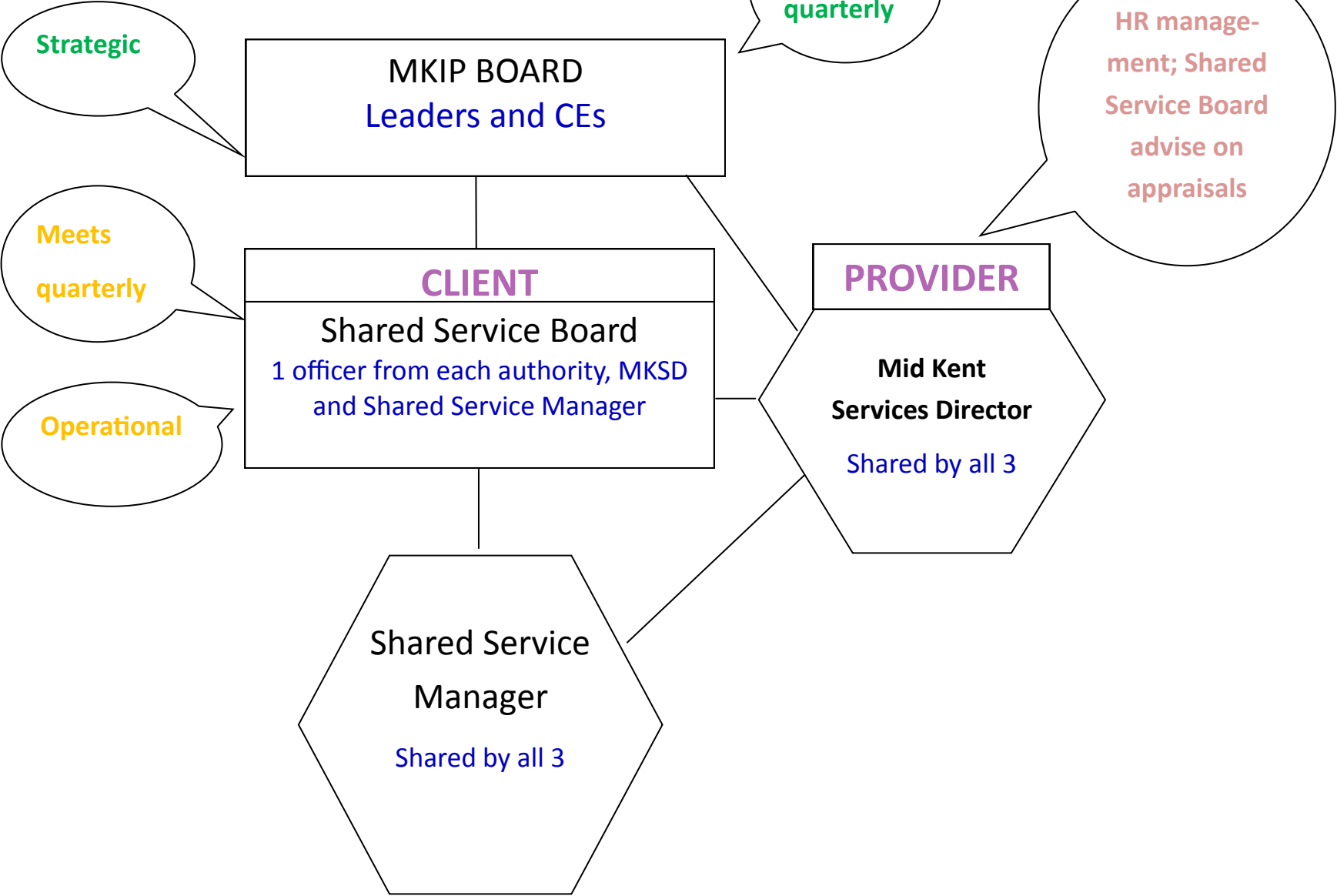
Shared Service Manager: Ryan O’Connell

Line Manager: Rob Jarman

Shared Service Board: Rob Jarman (MBC), James

Freeman (SBC), Jane Lynch (TWBC)

**Governance for MKS:**  
**Audit, HR, ICT, Legal, Revs and Bens**



**Internal Audit (4-way also shared with Ashford)**

Shared Service Manager: Rich Clarke

Line Manager: Paul Taylor

Shared Service Board: David Edwards (MBC), Mark Radford (SBC), Lee Colyer (TWBC), Paul Naylor (ABC)

**Governance for MKS:  
Shared Service Board Arrangements**

**HR and Payroll (2-way MBC and SBC)**

Shared Service Manager: Dena Smart

Line Manager: Paul Taylor

Shared Service Board: David Edwards, Mark Radford

**ICT (3-way)**

Shared Service Manager: Andy Cole

Line Manager: Paul Taylor

Shared Service Board: David Edwards, Mark Radford, Lee Colyer

**Legal (3-way)**

Shared Service Manager: John Scarborough

Line Manager: Paul Taylor

Shared Service Board: David Edwards, Mark Radford, Lee Colyer

**Revenues and Benefits (2-way MBC and TWBC)**

Shared Service Manager: Steve McGinnes

Line Manager: Paul Taylor

Shared Service Board: David Edwards, Mark Radford, Lee Colyer